



WHITE SAND

NORTH COAST
Unit Types & Floor Plans



Coastal Serenity

THE MASTER PLAN

KEY:

- 1. BEACH PROMENADE
- 2. CLUB HOUSE
- 3. ACTIVITY ZONE - A
- 4. ACTIVITY ZONE - B
- 5. COMMERCIAL HUB
- 6. CHALET TYPE 1
- 7. TOWN HOUSE / STANDALONE CHALET
- 8. CABINS / CHALET TYPE 2
- 9. TWIN HOUSE

FACTS ABOUT WHITESAND



TOTAL AREA
186 FEDDAN



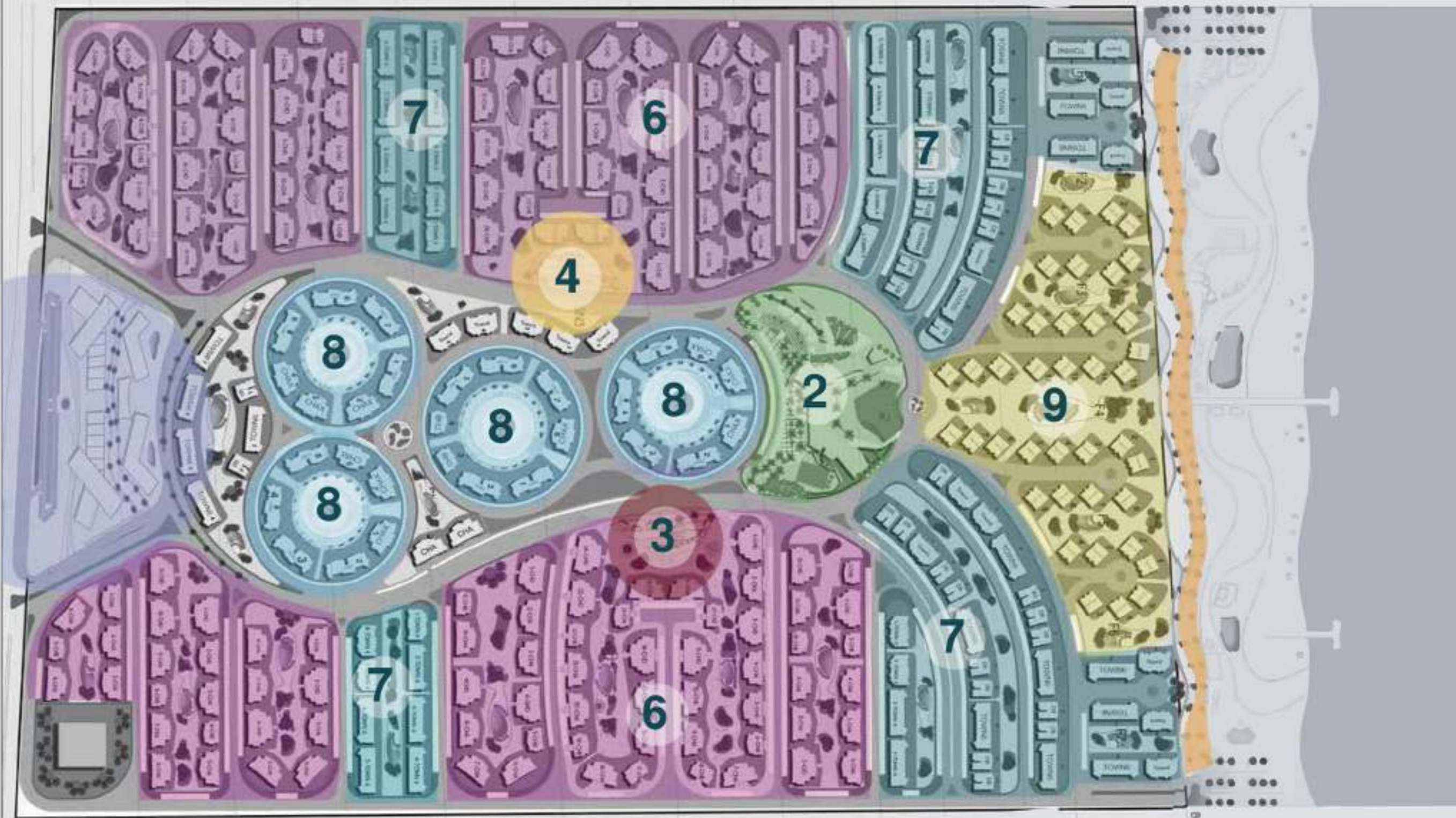
LOCATION
75 KM



BEACH FRONT
750 METERS



SWIMMING POOLS
22



THE MASTER PLAN



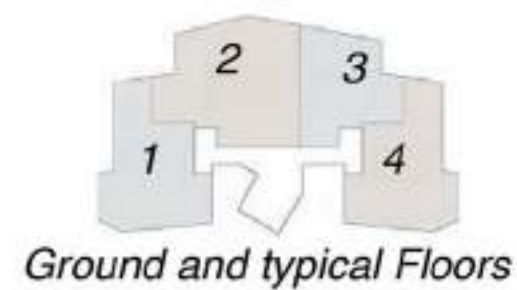
CHALET TYPE 1



CHALET - TYPE 1 A



CHALET - TYPE 1 A



Ground Floor

3 Typical Floor

Penthouse

Total Areas From : 94_{SQM} - 216_{SQM}

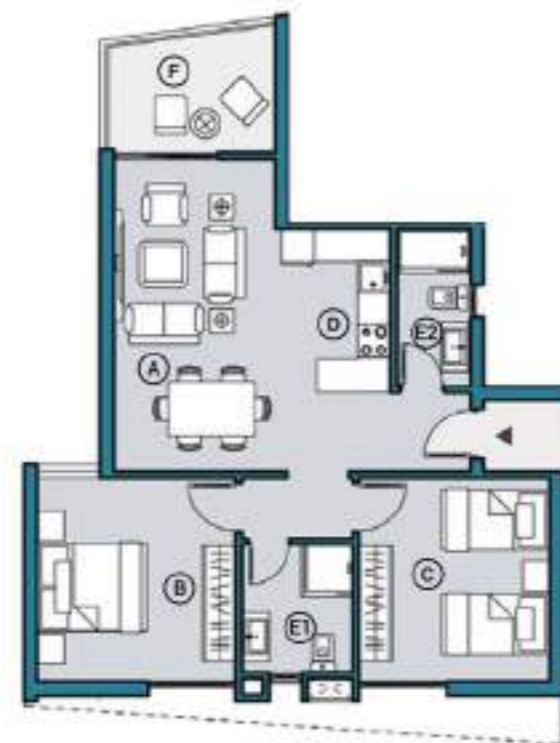


Units: U11, U21, U14 & U24	
Total Area	118sqm
A-Reception	2.95 x 5.75
B-Bedroom 1	3.50 x 3.75
C-Bedroom 2	3.65 x 3.75
D-Kitchen	2.10 x 3.00
E1-Bathroom	2.90 x 1.35
E2-Bathroom	2.00 x 2.35
F-Terrace	2.15 x 3.05



Units: U01 & U04	
Total Area	107sqm
A- Reception	2.95 x 5.75
B- Bedroom 1	3.65 x 3.75
C- Bedroom 2	3.50 x 3.75
D- Kitchen	2.10 x 2.80
E1- Bathroom	2.00 x 2.45
E2- Bathroom	1.60 x 2.70
F- Terrace	2.10 x 3.05

Ground Floors includes Garden



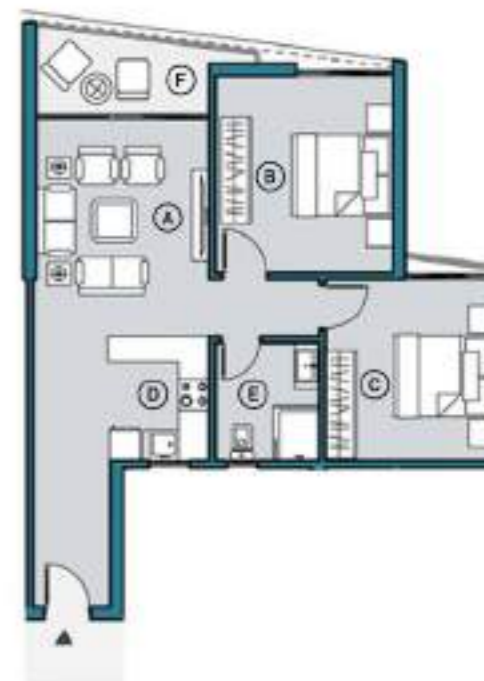
Units: U02, U13, U33& U22	
Total Area	156sqm
A-Reception	3.35 x 3.20
B-Bedroom 1	3.65 x 3.50
C-Bedroom 2	3.65 x 3.55
D-Bedroom 3	3.45 x 3.35
E-Kitchen	3.00 x 2.90
F1-Bathroom	1.80 x 2.20
F2-Bathroom	2.00 x 2.20
G-Terrace	3.35 x 2.00
H-Dinning	5.00 x 2.50

Ground Floors includes Garden



Units: U03, U12, U32& U23	
Total Area	94sqm - 99sqm
A-Reception	3.40 x 4.30
B-Bedroom 1	3.50 x 3.90
C-Bedroom 2	3.45 x 3.45
D-Kitchen	2.00 x 2.45
E-Bathroom	2.20 x 1.90
F-Terrace	3.40 x 1.50

Ground Floors includes Garden



Disclaimer

All room dimensions are measured to structural elements and exclude wall finishes and construction tolerance. All materials, dimensions and drawings are approximate and information is subject to change without notice. The developer reserves the right to make revisions.

The unit orientation will be as shown in the parcel layout and not as shown in the floor plans. Floor plans furniture and gardens softscape andhardscape materials are presentation and not included in unit

Unit: U33	
Total Area	190sqm
A-Reception	3.35 x 3.20
B-Bedroom 1	3.65 x 3.50
C-Bedroom 2	3.65 x 3.55
D-Bedroom 3	3.45 x 3.35
E-Kitchen	3.00 x 2.90
F1-Bathroom	1.80 x 2.20
F2-Bathroom	2.00 x 2.20
G-Terrace	3.35 x 2.00
H-Dinning	5.00 x 2.50
Roof	
A- Roof room	4.75 x 3.30
B- Kitchen	2.30 x 2.30
C- Bathroom	2.20 x 1.30
D- Terrace	10.80 x 7.00
<i>Open Roof 65SQM</i>	



Units: U31 & U34	
Total Area	152sqm
Third Floor	
A- Reception	2.95 x 5.75
B- Bedroom 1	3.65 x 3.75
C- Bedroom 2	3.50 x 3.75
D- Kitchen	2.80 x 2.10
E1- Bathroom	2.70 x 1.80
E2- Bathroom	2.00 x 2.45
F- Terrace	3.10 x 2.35
Roof	
A- Roof room	5.20 x 2.80
B- Kitchen	2.30 x 1.25
C- Bathroom	2.20 x 1.50
D- Terrace	12.10 x 4.50
<i>Open Roof 55SQM</i>	



Disclaimer

All room dimensions are measured to structural elements and exclude wall finishes and construction tolerance. All materials, dimensions and drawings are approximate and information is subject to change without notice. The developer reserves the right to make revisions.

The unit orientation will be as shown in the parcel layout and not as shown in the floor plans. Floor plans furniture and gardens softscape and hardscape materials are presentation and not included in unit

Unit :U32		
Total Area	129sqm	
A-	Reception	3.40 x 4.30
B-	Bedroom	3.50 x 3.90
C-	Bathroom	3.45 x 3.45
D-	Bedroom	2.00 x 2.45
E-	Kitchen	2.20 x 1.90
F-	Terrace	3.40 x 1.50
Roof		
A-	Roof room	4.75 x 3.30
B-	Kitchen	2.30 x 2.30
C-	Bathroom	2.20 x 1.30
D-	Terrace	10.80 x 7.00
<i>Open Roof 71SQM</i>		



Disclaimer

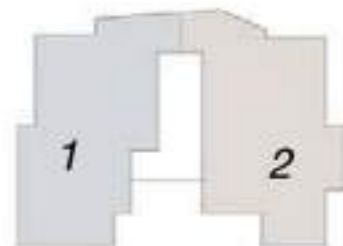
All room dimensions are measured to structural elements and exclude wall finishes and construction tolerance. All materials, dimensions and drawings are approximate and information is subject to change without notice. The developer reserves the right to make revisions.

The unit orientation will be as shown in the parcel layout and not as shown in the floor plans. Floor plans furniture and gardens softscape andhardscape materials are presentation and not included in unit



CHALET - TYPE 1 B

CHALET - TYPE 1 B



Ground Floor

3 Typical Floor

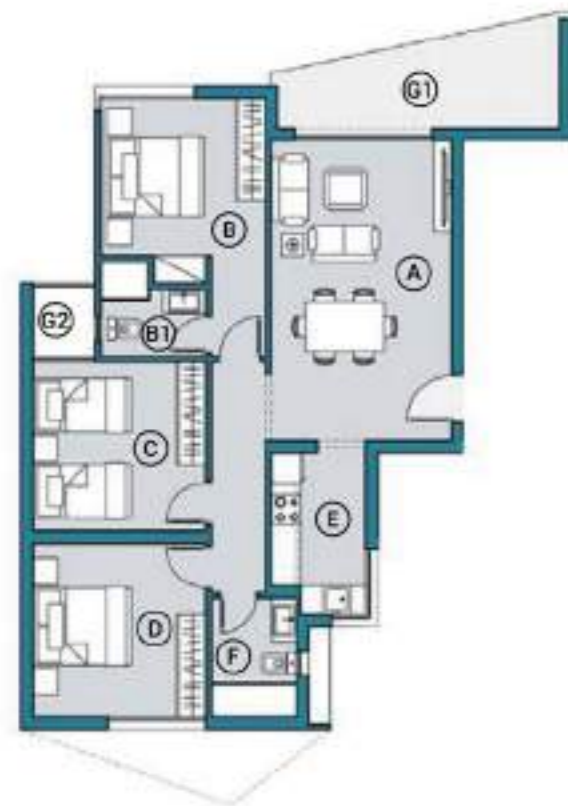
Penthouse

Total Areas From : 126_{SQM} - 192_{SQM}



Total Area	126sqm - 136sqm
A-Reception	6.15 x 3.70
B-Master Bedroom	3.40 x 3.20
B1-Bathroom	2.15 x 1.40
C-Bedroom 1	3.55 x 3.45
D-Bedroom 2	3.60 x 3.55
E-Kitchen	3.30 x 1.95
F-Bathroom	2.45 x 1.75
G1-Terrace	5.75 x 1.75
G2-Terrace	1.25 x 1.45

Ground Floor includes Garden



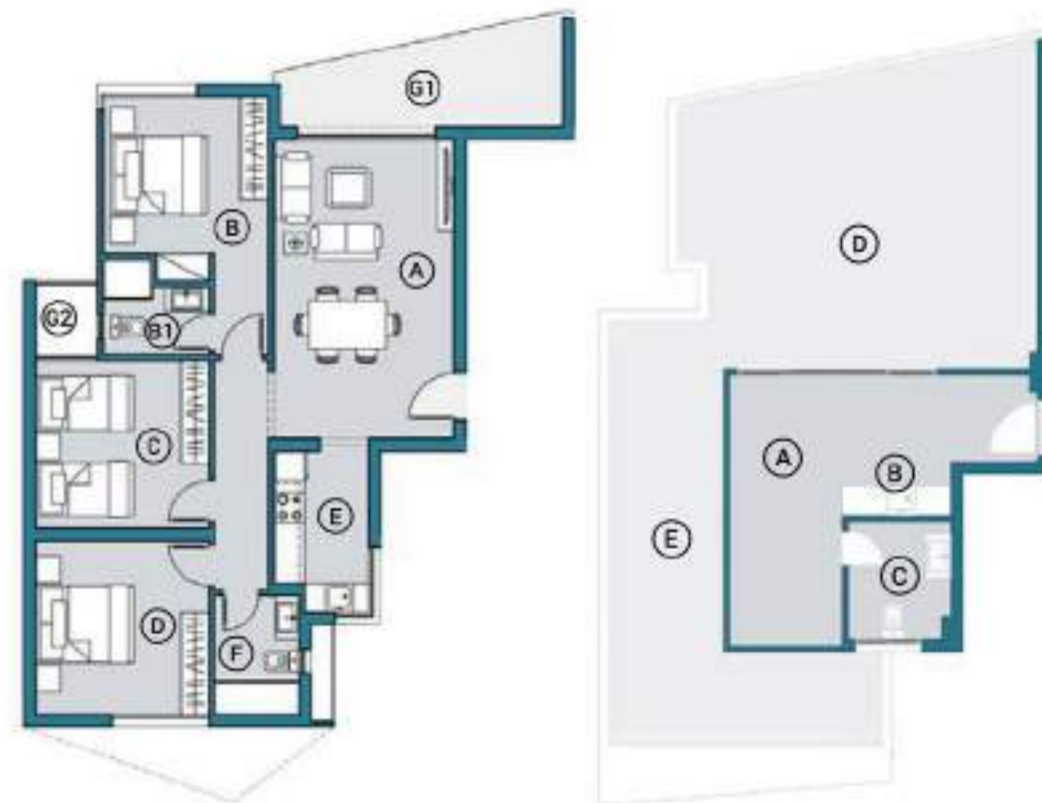
Units: U02, U12 & U22	
Total Area	124sqm - 133sqm
A-Reception	5.95 x 3.70
B-Master Bedroom	3.55 x 3.40
B1-Bathroom	2.15 x 1.40
C-Bedroom 1	3.55 x 3.60
D-Bedroom 2	3.60 x 3.35
E-Kitchen	2.00 x 3.65
F-Bathroom	1.50 x 3.05
G1-Terrace	1.95 x 4.40
G2-Terrace	1.15 x 1.45

Ground Floor includes Garden



Unit: U32 (Penthouse)	
Total Area	173-175sqm
Third Floor	
A-Reception	6.15 x 3.70
B-Master Bedroom	3.40 x 3.20
B1-Bathroom	2.15 x 1.40
C-Bedroom 1	3.55 x 3.45
D-Bedroom 2	3.60 x 3.55
E-Kitchen	3.30 x 1.95
F-Bathroom	2.45 x 1.75
G1-Terrace	5.75 x 1.75
G2-Terrace	1.25 x 1.45
Roof	
A- Roof room	5.40 x 2.30
B-Kitchen	2.20 x 1.10
C-Bathroom	2.40 x 2.00
D-Terrace	6.55 x 6.10
E-Terrace	8.45 x 2.25

Open Pool 71-82SQM



Disclaimer

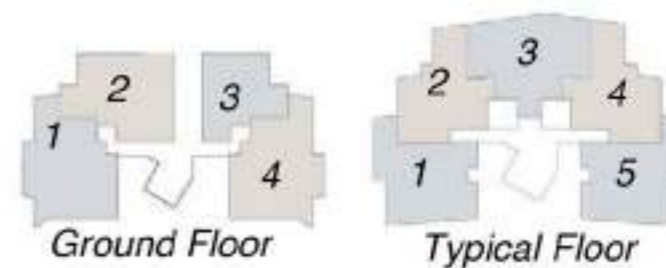
All room dimensions are measured to structural elements and exclude wall finishes and construction tolerance. All materials, dimensions and drawings are approximate and information is subject to change without notice. The developer reserves the right to make revisions.

The unit orientation will be as shown in the parcel layout and not as shown in the floor plans. Floor plans furniture and gardens softscape and hardscape materials are presentation and not included in unit.

CHALET - TYPE 1 D



CHALET - TYPE 1 D



Ground Floor

3 Typical Floor

Penthouse

Total Areas From : 109_{SQM} - 195_{SQM}



Units: U02 & U03	
Total Area	147sqm - 155sqm
A- Reception	4.50 x 3.30
B- Master Bedroom	3.40 x 4.90
B1- Bathroom	2.35 x 2.10
C- Bedroom 1	3.45 x 3.40
D- Bedroom 2	3.70 x 3.35
E- Kitchen	2.95 x 2.40
F- Bathroom	2.90 x 2.00
G1- Terrace	2.50 x 2.10
G2- Terrace	8.90 x 1.55
H- Dining	3.55 x 3.00

Ground Floor includes Garden



Units: U01 & U04	
Total Area	121sqm
A- Reception	6.70 x 3.70
B- Bedroom 1	3.60 x 3.50
B1- Bathroom	3.05 x 1.60
C- Bedroom	4.00 x 3.20
D- Kitchen	4.20 x 2.50
E- Bathroom	2.40 x 2.30
F- Terrace	2.10 x 2.60

Ground Floor includes Garden



Units: U11, U15, U21, U25, U31 & U35	
Total Area	128sqm - 130sqm
A- Reception	6.70 x 3.70
B- Bedroom 1	3.60 x 3.50
B1- Bathroom	3.00 x 1.60
C- Bedroom 2	4.10 x 3.20
D- Kitchen	3.20 x 2.50
E2- Bathroom	2.40 x 2.30
F- Terrace	2.10 x 2.60



Units: U12, U14, U22 & U24	
Total Area	109sqm - 111sqm
A- Reception	4.65 x 3.30
B- Bedroom1	3.40 x 3.40
C- Bedroom2	3.70 x 3.35
D- Kitchen	3.10 x 2.70
E- Bathroom	2.90 x 2.00
F- Terrace	2.40 x 2.30
G- Dining	3.55 x 2.95



Disclaimer

All room dimensions are measured to structural elements and exclude wall finishes and construction tolerance. All materials, dimensions and drawings are approximate and information is subject to change without notice. The developer reserves the right to make revisions.

The unit orientation will be as shown in the parcel layout and not as shown in the floor plans. Floor plans furniture and gardens softscape and hardscape materials are presentation and not included in unit

Units: U13, U23 & U33	
Total Area	137sqm - 138sqm
A-Reception	6.30 x 4.00
B-Bedroom 1	4.85 x 3.45
C-Bedroom 2	4.85 x 3.45
D-Kitchen	3.20 x 2.20
E-Bathroom	2.45 x 2.10
F-Terrace	6.20 x 2.50



Units 32 & 34 (Penthouse)	
Total Area	194sqm - 195sqm
<i>Third Floor</i>	
A- Reception	4.45 x 3.30
B- Bedroom1	3.40 x 3.40
C- Bedroom2	3.70 x 3.35
D- Bathroom	3.00 x 1.80
E- Terrace	3.80 x 2.25
F- Kitchen	1.20 x 1.70
G- Dining	2.80 x 3.00
<i>Roof</i>	
A- Reception	4.45 x 4.45
B- Bedroom	3.75 x 3.50
C- Kitchen	2.00 x 2.65
D- Bathroom	3.05 x 1.80
E- Terrace	10.12 x 5.35
<i>Open Roof 45-53 SQM</i>	



Disclaimer

All room dimensions are measured to structural elements and exclude wall finishes and construction tolerance. All materials, dimensions and drawings are approximate and information is subject to change without notice. The developer reserves the right to make revisions.

The unit orientation will be as shown in the parcel layout and not as shown in the floor plans. Floor plans furniture and gardens softscape andhardscape materials are presentation and not included in unit

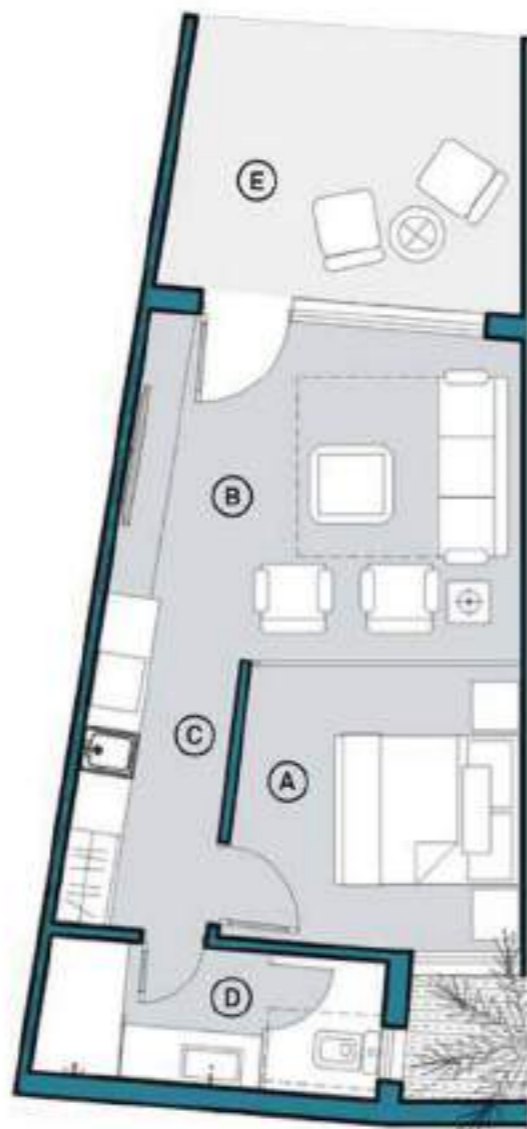
CABANA & CHALET TYPE 2



CABANA



Units: U01, U11, U21 & U31	
Total Area	57sqm
A-Bedroom	2.95 x 3.30
B-Reception	4.00 x 3.80
C-Kitchen	3.65 x 1.60
D-Bathroom	3.65 x 1.50
E-Terrace	3.55 x 3.15



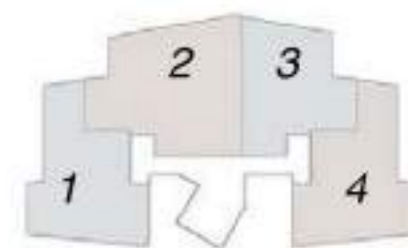
Disclaimer

All room dimensions are measured to structural elements and exclude wall finishes and construction tolerance. All materials, dimensions and drawings are approximate and information is subject to change without notice. The developer reserves the right to make revisions.

The unit orientation will be as shown in the parcel layout and not as shown in the floor plans. Floor plans furniture and gardens softscape and hardscape materials are presentation and not included in unit.

CHALET - TYPE 2 AX





Ground Floor

2 Typical Floor

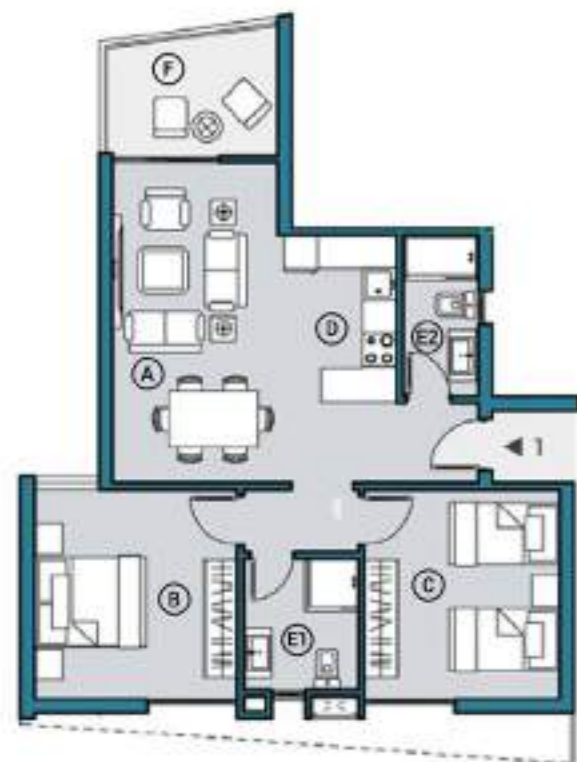
Roof Floor

Total Areas From : 94_{SQM} - 156_{SQM}



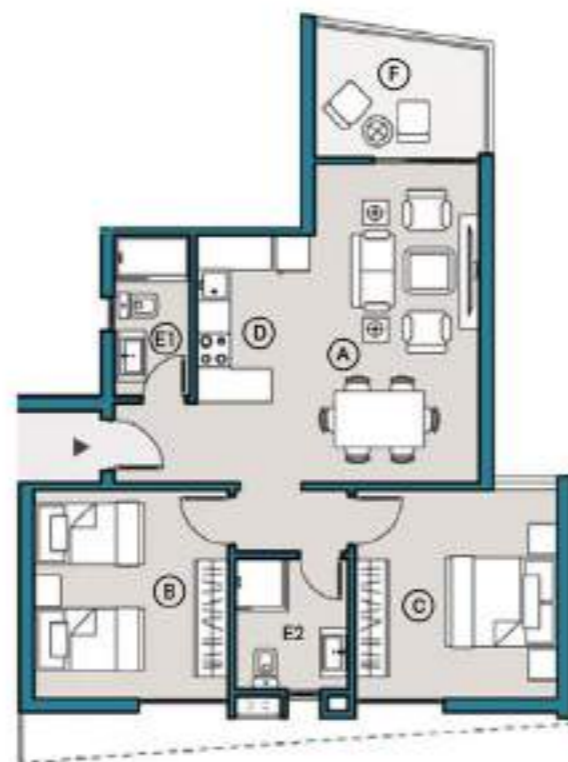
Units: U01 & U04	
Total Area	107sqm
A- Reception	2.95 x 5.75
B- Bedroom 1	3.65 x 3.75
C- Bedroom 2	3.50 x 3.75
D- Kitchen	2.70 x 2.10
E1- Bathroom	2.54 x 2.00
E2- Bathroom	2.45 x 2.00
F- Terrace	2.10 x 3.055

Ground Floors includes Garden



Units: U11, U14, U21 & U24	
Total Area	118sqm - 121sqm
A-Reception	2.95 x 5.75
B-Bedroom 1	3.50 x 3.75
C-Bedroom 2	3.65 x 3.75
D-Kitchen	2.70 x 2.10
E1-Bathroom	2.45 x 2.00
E2-Bathroom	2.40 x 2.00
F-Terrace	3.00 x 2.30

Ground Floors includes Garden



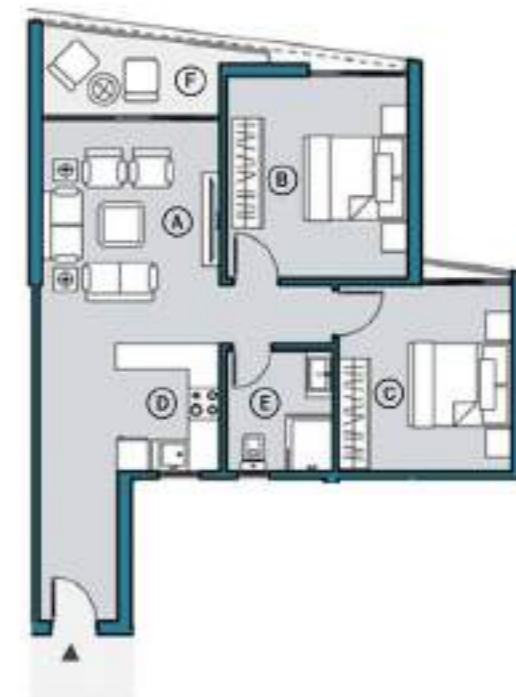
Units: U02, U12 & U23	
Total Area	149sqm - 156sqm
A-Reception	3.30 x 3.20
B- Bedroom 1	3.60 x 3.50
C- Bedroom 2	3.70 x 3.60
D- Bedroom 3	3.45 x 3.45
E- Kitchen	3.00 x 2.75
F- Bathroom	2.20 x 1.67
F2- Bathroom	2.20 x 1.83
G- Terrace	3.30 x 2.00
H- Dining	5.10 x 2.00

Ground Floors includes Garden



Units: U03, U13 & U22	
Total Area	94sqm - 101sqm
A-Reception	3.40 x 4.30
B-Bedroom 1	3.50 x 3.90
C-Bedroom 2	3.35 x 3.60
D-Kitchen	2.00 x 2.45
E-Bathroom	2.00 x 2.35
F-Terrace	3.40 x 1.50

Ground Floors includes Garden

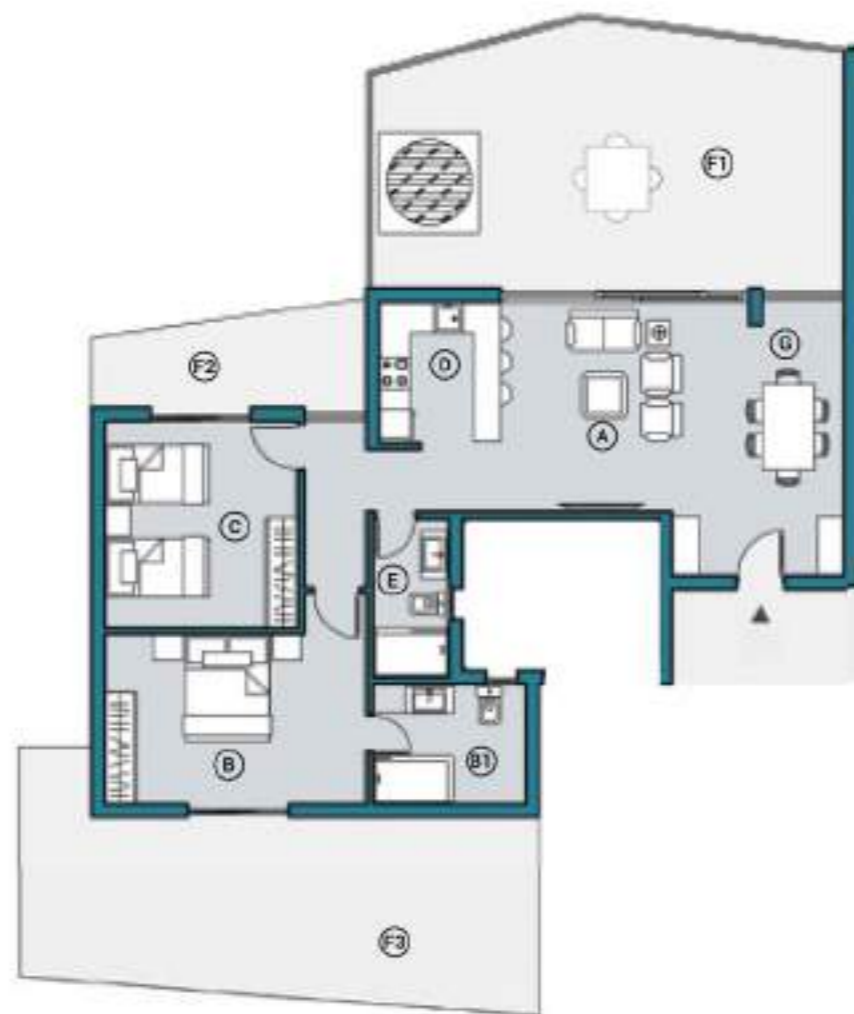


Disclaimer

All room dimensions are measured to structural elements and exclude wall finishes and construction tolerance. All materials, dimensions and drawings are approximate and information is subject to change without notice. The developer reserves the right to make revisions.

The unit orientation will be as shown in the parcel layout and not as shown in the floor plans. Floor plans furniture and gardens softscape and hardscape materials are presentation and not included in unit

Units: U31 & U32	
Total Area	126sqm
A-Reception	4.25 x 4.00
B-Master Bedroom	4.95 x 3.20
B1-Bathroom	2.90 x 2.30
C-Bedroom	3.65 x 4.00
D-Kitchen	2.30 x 2.75
E-Bathroom	1.45 x 3.00
G-Dinning	2.25 x 3.60
F1-Terrace	4.70 x 9.00
F2-Terrace	1.70 x 5.20
F3-Terrace	3.50 x 9.90
Open Roof 82SQM - 88SQM	



Disclaimer

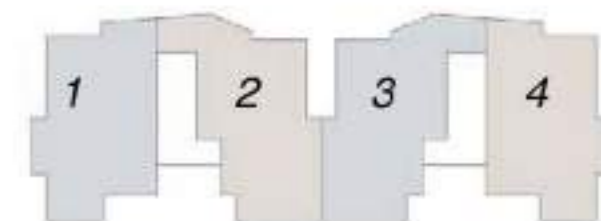
All room dimensions are measured to structural elements and exclude wall finishes and construction tolerance. All materials, dimensions and drawings are approximate and information is subject to change without notice. The developer reserves the right to make revisions.

The unit orientation will be as shown in the parcel layout and not as shown in the floor plans. Floor plans furniture and gardens softscape andhardscape materials are presentation and not included in unit

CHALET - TYPE 2 B



CHALET - TYPE 2 B



Ground Floor

2 Typical Floor

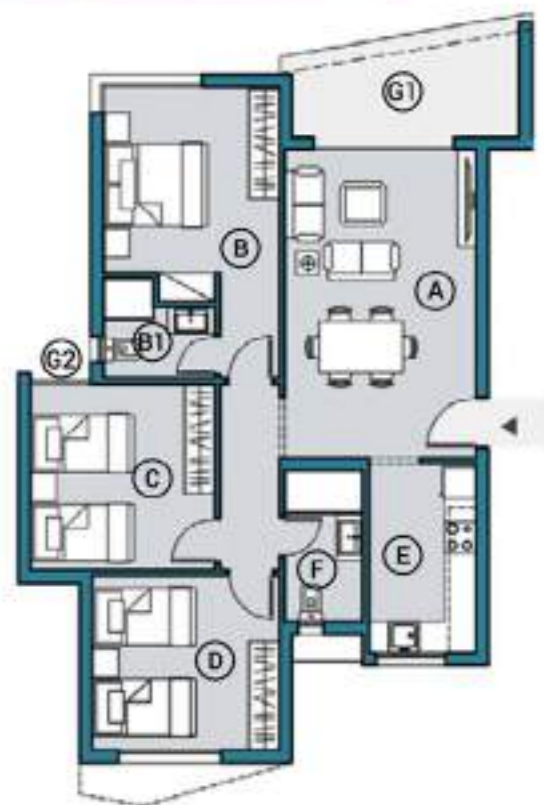
Roof Floor

Total Areas From : 69_{SQM} - 136_{SQM}



Units: U01, U04, U11, U14, U21 & U24	
Total Area	124-130sqm
A-Reception	6.00 x 3.70
B-master bedroom	3.70 x 3.40
B1-bathroom	1.95 x 1.90
C-Bedroom 1	3.55 x 3.60
D-Bedroom 2	3.60 x 3.35
E-Kitchen	2.00 x 3.65
F-Bathroom	1.50 x 3.05
G1-Terrace	1.95 x 4.40
G2-Terrace	1.37 x 0.90

Ground Floors includes Garden



Units: U02, U03, U12, U13, U22 & U23	
Total Area	126sqm - 136sqm
A-Reception	6.15 x 3.70
B-Master Bedroom	3.40 x 3.20
B1-Bathroom	2.15 x 1.90
C-Bedroom 1	3.50 x 3.50
D-Bedroom 2	3.60 x 3.55
E-Kitchen	3.30 x 1.95
F-Bathroom	2.45 x 1.75
G1-Terrace	5.75 x 1.75
G2-Terrace	1.25 x 0.90

Ground Floors includes Garden



Units: U31 & U34	
Total Area	69sqm
A-Reception	6.15 x 3.55
B-Bedroom	3.50 x 3.40
C-Kitchen	3.50 x 2.65
D-Bathroom	3.05 x 2.15
E1-Terrace	9.50 x 3.70
E2-Terrace	5.65 x 3.70

Open Roof 55sqm



Units: U32 & U33	
Total Area	73sqm
A-Reception	6.15 x 3.55
B-Bedroom	5.00 x 3.20
C-Kitchen	3.45 x 1.70
D-Bathroom	3.40 x 1.70
E1-Terrace	5.80 x 3.35
E2-Terrace	7.25 x 3.60

Open Roof 53-57 SQM



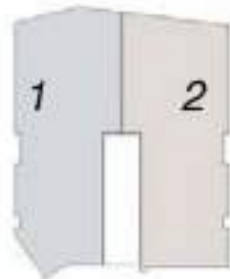
Disclaimer

All room dimensions are measured to structural elements and exclude wall finishes and construction tolerance. All materials, dimensions and drawings are approximate and information is subject to change without notice. The developer reserves the right to make revisions.

The unit orientation will be as shown in the parcel layout and not as shown in the floor plans. Floor plans furniture and gardens softscape and hardscape materials are presentation and not included in unit

STANDALONE CHALET





*Ground Floor
Duplex*

Total Areas From : 140_{SQM} - 222_{SQM}



Units: U01 & U02	
Total Area	140sqm - 142sqm
A-Reception	4.00 x 5.95
B-Master Bedroom	4.20 x 3.30
B1-Bathroom	1.40 x 3.20
C-Kitchen	3.15 x 2.50
D-Bathroom	2.70 x 2.40
E-Bedroom	4.35 x 3.25
F-Terrace	7.15 x 2.10
G-Dinning	3.15 x 3.45



Ground Floor

Unit: U12	
Total Area	214sqm
<i>First Floor</i>	
A-Reception	4.00 x 3.70
B-Master Bedroom	3.15 x 2.50
B1-Bathroom	2.70 x 2.40
C-Kitchen	4.35 x 3.25
D-Bathroom	3.30 x 3.60
E-Bedroom	1.60 x 1.60
F-Terrace	2.50 x 7.15
G-Dinning	3.15 x 3.25
<i>Roof</i>	
A-Living Room	4.00 x 3.15
B-Bedroom 1	3.55 x 3.50
C-Bedroom 2	3.50 x 4.75
D-Bathroom	1.95 x 1.70
E1-Terrace1	7.15 x 5.30
E2-Terrace2	6.80 x 3.75
<i>Open Roof 09 SQM</i>	



First Floor



Roof

Disclaimer

All room dimensions are measured to structural elements and exclude wall finishes and construction tolerance. All materials, dimensions and drawings are approximate and information is subject to change without notice. The developer reserves the right to make revisions.

The unit orientation will be as shown in the parcel layout and not as shown in the floor plans. Floor plans furniture and gardens softscape and hardscape materials are presentation and not included in unit.

Unit: U11	
Total Area	222sqm
<i>First Floor</i>	
A-Reception	4.00 x 3.70
B-Kitchen	4.00 x 3.70
C-Bathroom	2.70 x 2.10
D-Bedroom	4.35 x 3.60
E-Master Bedroom	3.30 x 3.60
E1-Bathroom	1.60 x 1.60
F-Terrace	2.50 x 7.15
G-Dinning	3.15 x 3.25
<i>Roof</i>	
A-Living Room	4.00 x 3.15
B-Bedroom 1	3.55 x 3.50
C-Bedroom 2	3.50 x 4.75
D-Bathroom	1.95 x 1.70
E-Terrace 1	7.15 x 5.30
F-Terrace 2	6.80 x 3.75
<i>Open Roof 73 SQM</i>	



First Floor



Roof



Disclaimer

All room dimensions are measured to structural elements and exclude wall finishes and construction tolerance. All materials, dimensions and drawings are approximate and information is subject to change without notice. The developer reserves the right to make revisions.

The unit orientation will be as shown in the parcel layout and not as shown in the floor plans. Floor plans furniture and gardens softscape andhardscape materials are presentation and not included in unit

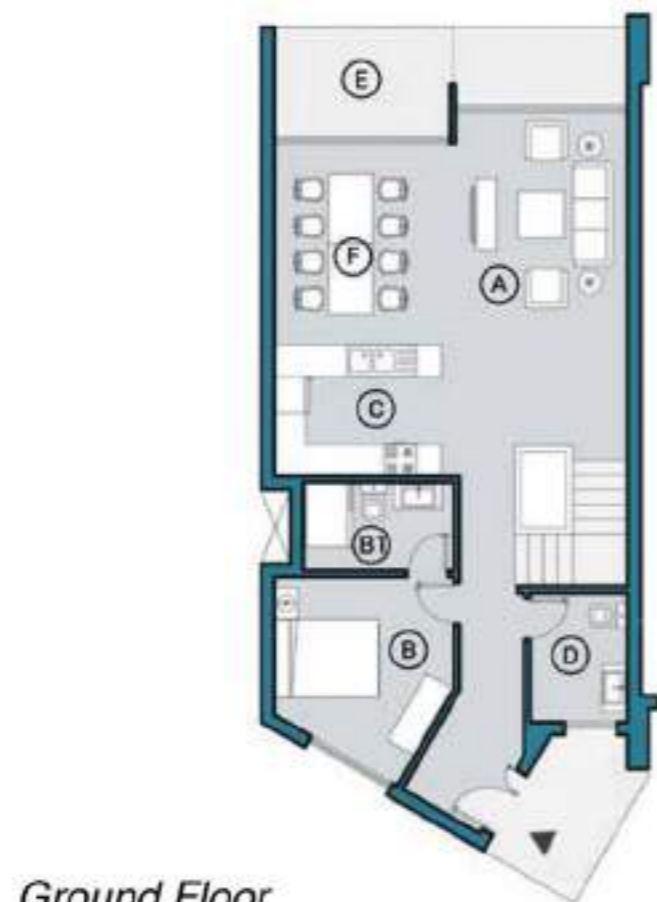
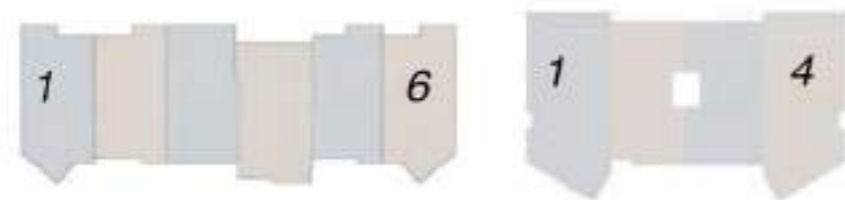
TOWN HOUSE



TOWN HOUSE



Corner Units	
Total Area	280sqm
<i>Ground Floor</i>	
A- Reception	6.40 x 3.30
B- Master Bedroom	2.85 x 3.40
B1- Bathroom	2.80 x 1.70
C- Kitchen	3.50 x 2.50
D- Guest Toilet	1.85 x 1.45
E- Terrace	3.35 x 2.11
F- Dinning	3.50 x 3.85
<i>First Floor</i>	
A- Master Bedroom	4.45 x 3.25
A1- Bathroom	2.80 x 2.15
B- Bedroom 1	4.65 x 3.30
C- Bedroom 2	3.20 x 2.85
D- Bedroom 3	4.10 x 3.00
E- Terrace	3.35 x 1.05
F- Bathroom	2.80 x 1.70
<i>Roof</i>	
A- Bedroom 1	4.10 x 3.00
B- Bedroom 2	3.55 x 3.70
C- Bathroom	2.80 x 1.70
D- Bathroom	2.80 x 2.15
E- Terrace	6.35 x 6.35
<i>Garden 160SQM</i>	
<i>Open Roof 40SQM</i>	

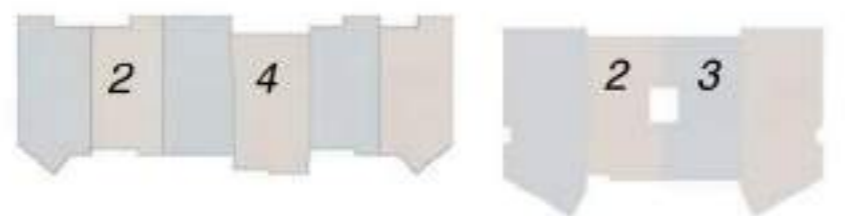


Disclaimer

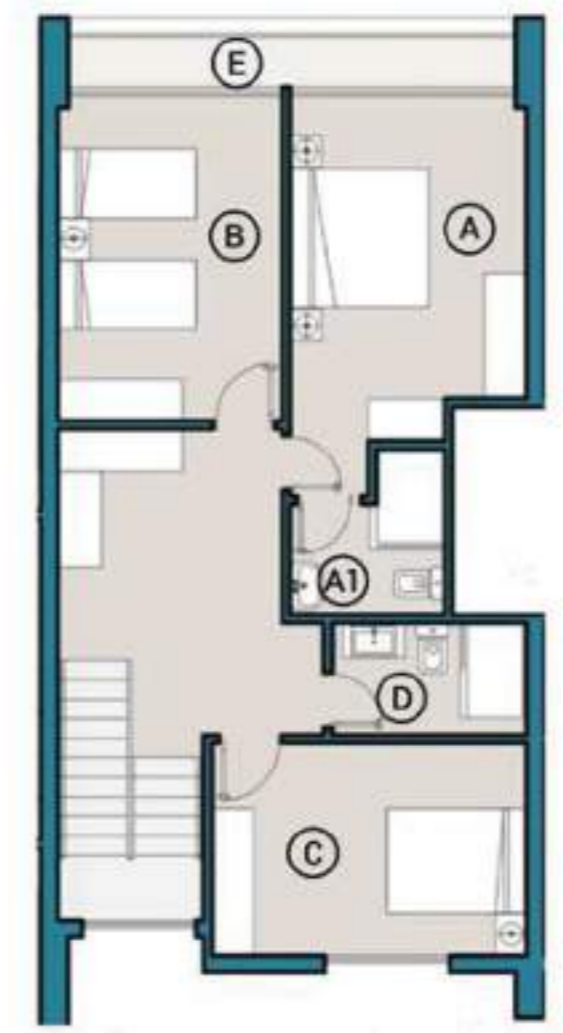
All room dimensions are measured to structural elements and exclude wall finishes and construction tolerance. All materials, dimensions and drawings are approximate and information is subject to change without notice. The developer reserves the right to make revisions.

The unit orientation will be as shown in the parcel layout and not as shown in the floor plans. Floor plans furniture and gardens softscape andhardscape materials are presentation and not included in unit

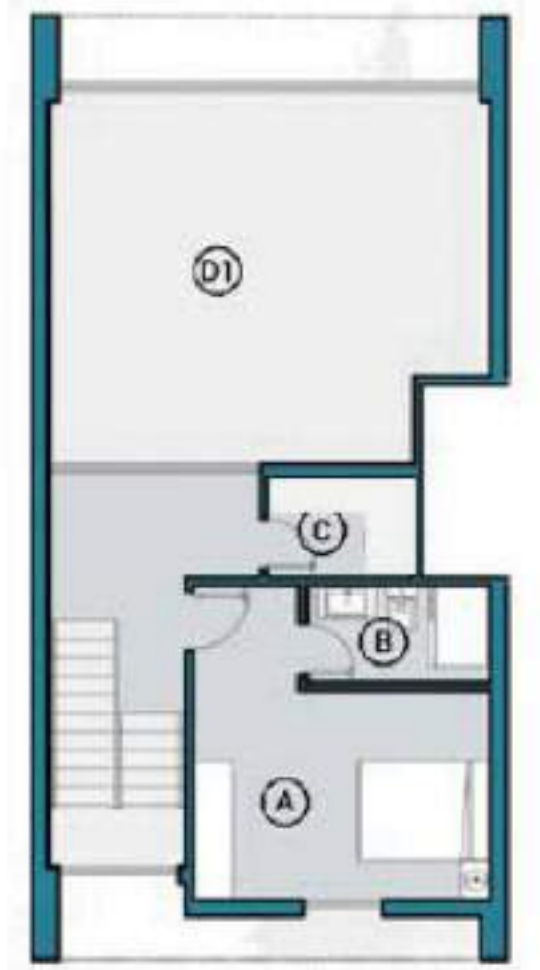
Middle A Units	
Total Area	250sqm
<i>Ground Floor</i>	
A- Reception	4.35 x 3.40
B- Master Bedroom	3.15 x 3.00
B1- Bathroom	3.00 x 1.50
C- Kitchen	3.15 x 2.55
D- Guest Toilet	1.95 x 1.40
E- Terrace	3.35 x 2.10
F- Dinning	3.65 x 3.25
<i>First Floor</i>	
A- Master Bedroom	4.95 x 3.40
A1- Bathroom	2.10 x 2.20
B- Bedroom 1	4.70 x 3.25
C- Bedroom 2	4.50 x 3.05
D- Bathroom	2.80 x 1.60
E- Terrace	6.45 x 0.75
<i>Roof</i>	
A- Master Bedroom	4.60 x 3.00
B- Bedroom	3.00 x 1.60
C- Guest Toilet	1.80 x 1.00
D1- Terrace	7.00 x 5.70
<i>Garden 100SQM</i>	
<i>Open Roof 38SQM</i>	



Ground Floor



First Floor



Roof

Disclaimer

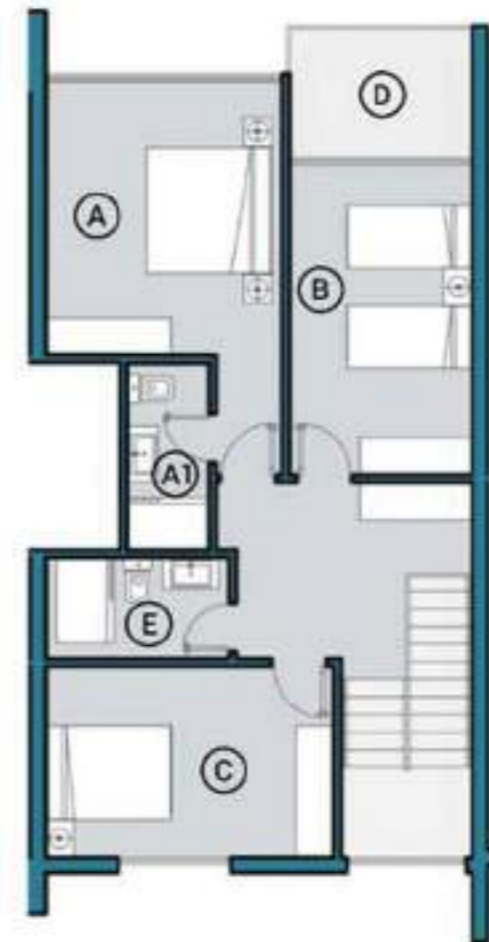
All room dimensions are measured to structural elements and exclude wall finishes and construction tolerance. All materials, dimensions and drawings are approximate and information is subject to change without notice. The developer reserves the right to make revisions.

The unit orientation will be as shown in the parcel layout and not as shown in the floor plans. Floor plans furniture and gardens softscape andhardscape materials are presentation and not included in unit

Middle B Units	
Total Area	207sqm
<i>Ground Floor</i>	
A- Reception	4.35 x 3.80
B- Master Bedroom	3.15 x 3.05
B1- Bathroom	1.50 x 2.50
C- Kitchen	3.15 x 2.50
D- Guest Toilet	2.00 x 1.90
E- Terrace	2.90 x 2.10
F- Dinning	3.00 x 4.50
<i>First Floor</i>	
A- Master Bedroom	4.35 x 3.80
A1- Bathroom	3.00 x 1.30
B- Bedroom 1	4.95 x 2.90
C- Bedroom 2	4.70 x 3.05
D- Terrace	2.90 x 2.05
E- Bathroom	2.90 x 1.60
<i>Roof</i>	
A- Terrace	4.75 x 12.75
<i>Garden 105SQM</i>	
<i>Open Roof 84SQM</i>	



Ground Floor



First Floor



Roof

Disclaimer

All room dimensions are measured to structural elements and exclude wall finishes and construction tolerance. All materials, dimensions and drawings are approximate and information is subject to change without notice. The developer reserves the right to make revisions.

The unit orientation will be as shown in the parcel layout and not as shown in the floor plans. Floor plans furniture and gardens softscape and hardscape materials are presentation and not included in unit

TWIN HOUSE - A



TWIN HOUSE - A



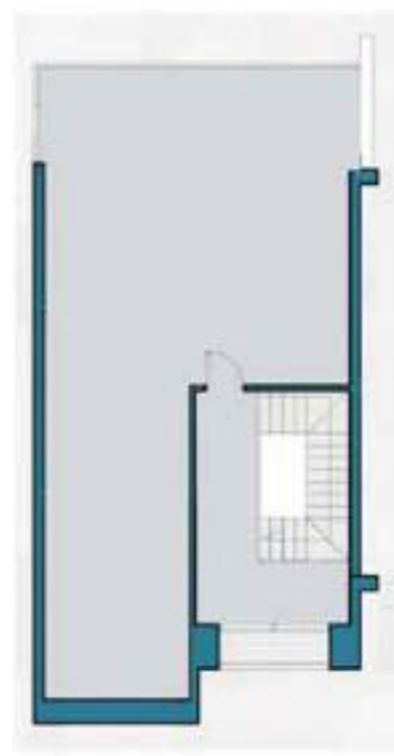
Unit: U01	
Total Area	238sqm
<i>Ground Floor</i>	
A-Reception	4.60 x 7.05
B-Master Bedroom	3.15 x 3.30
B1-Bathroom	1.15 x 3.30
C-Kitchen	2.40 x 3.45
D-Guest Toilet	1.15 x 3.30
E-Maid's + Bathroom	2.70 x 2.10
F-Terrace	3.00 x 7.80
<i>First Floor</i>	
A-Master Bedroom	3.80 x 3.50
A1-Bathroom	2.15 x 1.85
B- Bedroom 1	5.10 x 3.45
C- Bedroom 2	3.30 x 5.65
D- Bathroom	2.15 x 2.15
E- Terrace	3.90 x 1.50
<i>Garden 177SQM</i>	
<i>Open roof 84SQM</i>	



Ground Floor



First Floor



Roof Floor

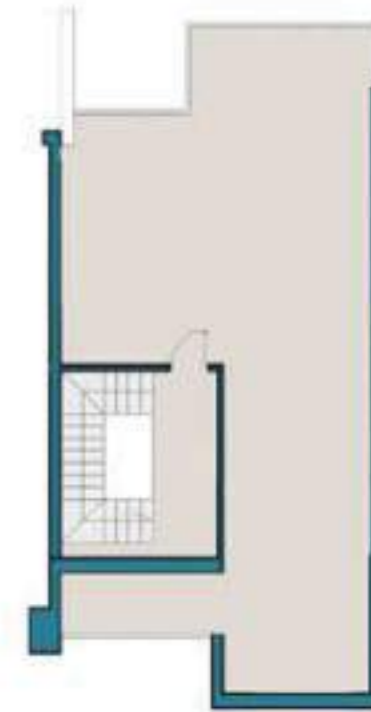
Unit: U02	
Total Area	243sqm
<i>First Floor</i>	
A-Reception	4.60 x 7.05
B-Master Bedroom	3.15 x 3.30
B1-Bathroom	1.15 x 3.30
C-Kitchen	2.90 x 2.40
D-Guest Toilet	1.15 x 3.30
E-Maid's+Bathroom	2.70 x 2.10
F-Terrace	5.10 x 3.45
<i>First Floor</i>	
A-Master Bedroom	3.85 x 3.55
A1-Bathroom	2.15 x 1.85
B-Bedroom 1	5.10 x 3.45
C-Bedroom 2	3.30 x 5.65
D-Bathroom	2.30 x 2.15
E1-Terrace	4.30 x 1.90
E2-Terrace	3.50 x 1.50
<i>Garden 174SQM</i>	
<i>Open Roof 79SQM</i>	



Ground Floor



First Floor



Roof Floor

Disclaimer

All room dimensions are measured to structural elements and exclude wall finishes and construction tolerance. All materials, dimensions and drawings are approximate and information is subject to change without notice. The developer reserves the right to make revisions.

The unit orientation will be as shown in the parcel layout and not as shown in the floor plans. Floor plans furniture and gardens softscape andhardscape materials are presentation and not included in unit



**WHITE
SAND**
NORTH COAST

GV | CALL US
DEVELOPMENTS | **16055**